



Institut für
Europäische
Ethnologie

Installation instruction for the printer Canon 4945 for Windows 10/11

Table of Contents

01 [Quick Guide](#)

02 [Step-by-Step Instructions with Images](#)

08 [Enable Secure Print](#)

Quick Guide

- On the [Canon website](#), select **Windows 10/11** as the operating system and download the driver **Generic Plus UFR II Printer Driver**.
- Run the downloaded file and execute **Setup.exe** from the **x64** folder.
- Accept the license agreement and choose **Custom** as the installation method.
- Do not select **Canon Driver Information Assist Service**, then click Next.
- Select the configuration profile **iR-ADV (Type 064)**.
- Either select Port: **172.18.14.120** or, if it's not available, click Add Port to create it. Then click Next.
- Add port as **Standard TCP/IP Port**. IP address: **172.18.14.120**.
- Review entries and start installation.
- Restart the computer immediately or later to complete the installation.
- To use Secure Print, go to the printer settings, change the output method to Secure Print, set a username and PIN, and confirm.
- At the printer, select your print job in the Print menu and start it by entering your PIN

[To Table of Contents](#)

Step-by-Step Instructions with Images

Select the operating system Windows 10 or 11

Ihr Betriebssystem

Windows 11

Download the **Generic Plus UFR II Printer Driver**.

PCLPOSTSCRIPTUFR II

Die von Canon entwickelte UFR II Druckertreiber stellt sicher, dass die verschiedenen, konventionell mit dem Drucker ausgeführten Datenverarbeitungsaufgaben angemessen zwischen Host-Computer und dem Drucker verteilt sind, um Druckzeit zu optimieren.


Neueste Version


[Windows 32bit & 64bit] Generic Plus UFR II Printer Driver V3.20

Dateiversion: V3.20 | **Veröffentlicht am:** 25 April 2025

Betriebssystem(e)			
Windows 11	Windows 10 (32-bit)	Windows 10 (64-bit)	Windows Server 2016 (64-bit)
Windows Server 2019 (64-bit)	Windows Server 2022 (64-bit)	Windows Server 2025	

Sprache(n)			
English	Français	Español	Italiano
Deutsch	Dansk	Suomi	Nederlands
Norsk	Svenska	Русский	العربية
Čeština	Magyar	Polski	Português
Türkçe	Slovensky	Українська	Euskara
Català	עברית	日本語	한국어
Malay	繁體中文	ไทย	Tiếng Việt
简体中文			

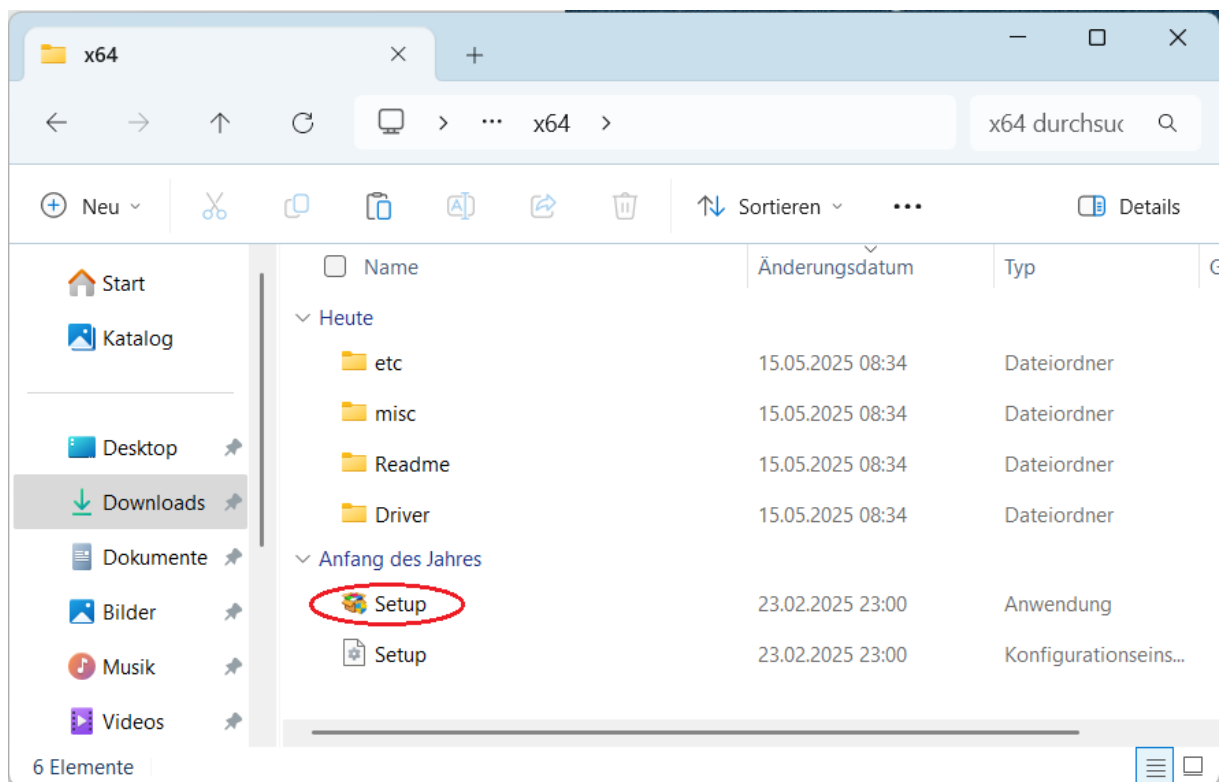
[Weitere Informationen](#) 

[E-Mail-Link](#) 

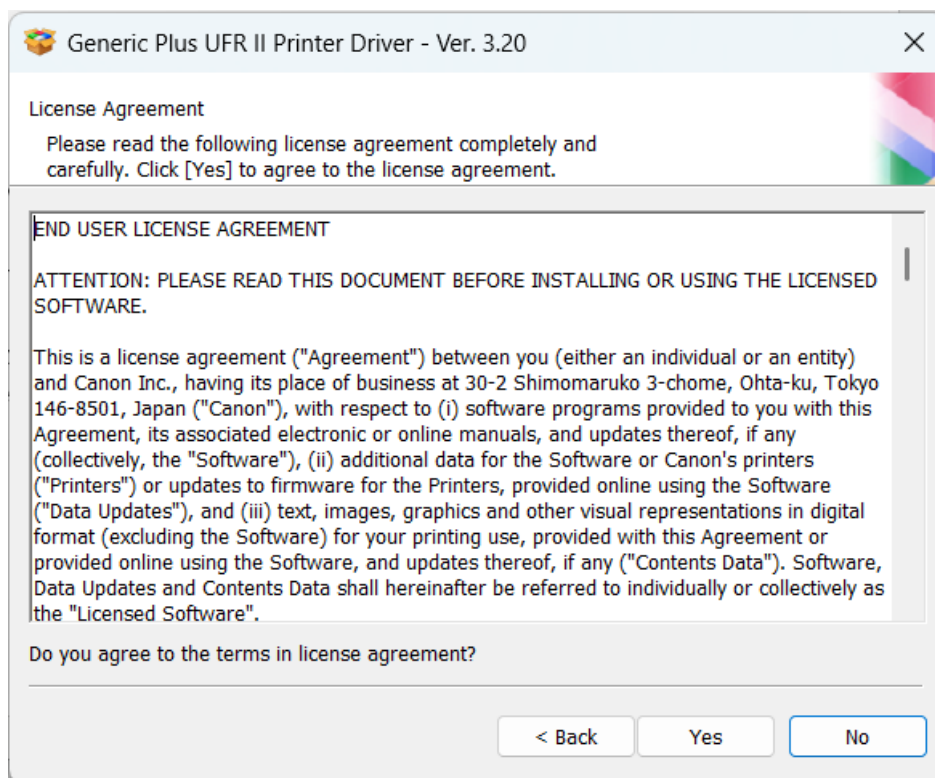
[DOWNLOAD](#)

[To Table of Contents](#)

Run the downloaded file. Navigate to the **x64** folder and execute file **Setup**.

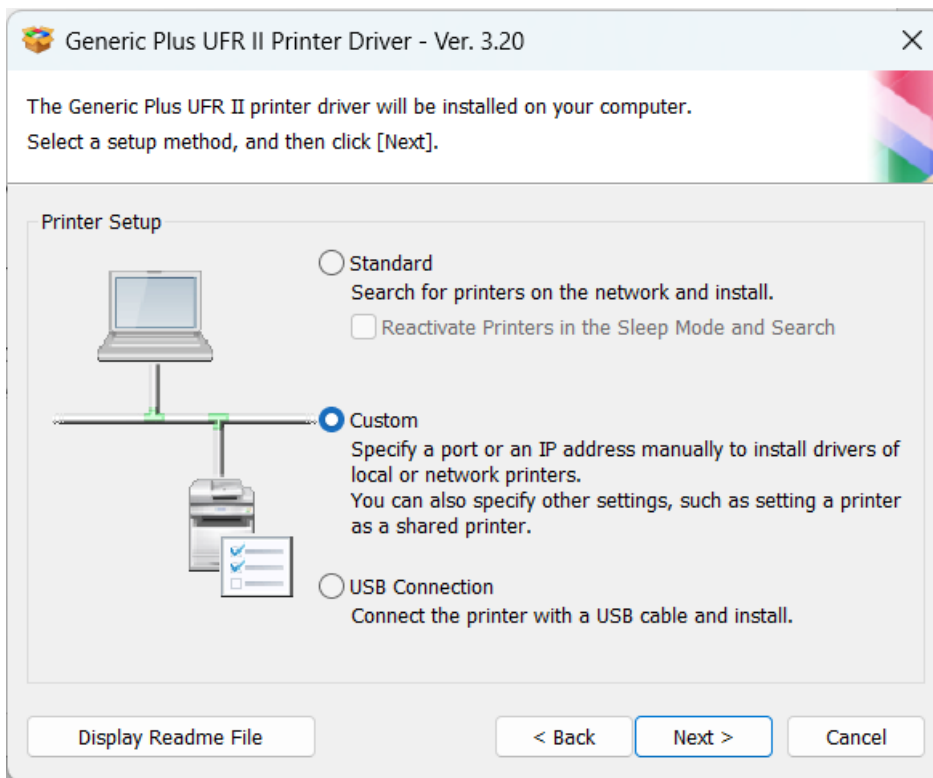


Accept the license agreement.

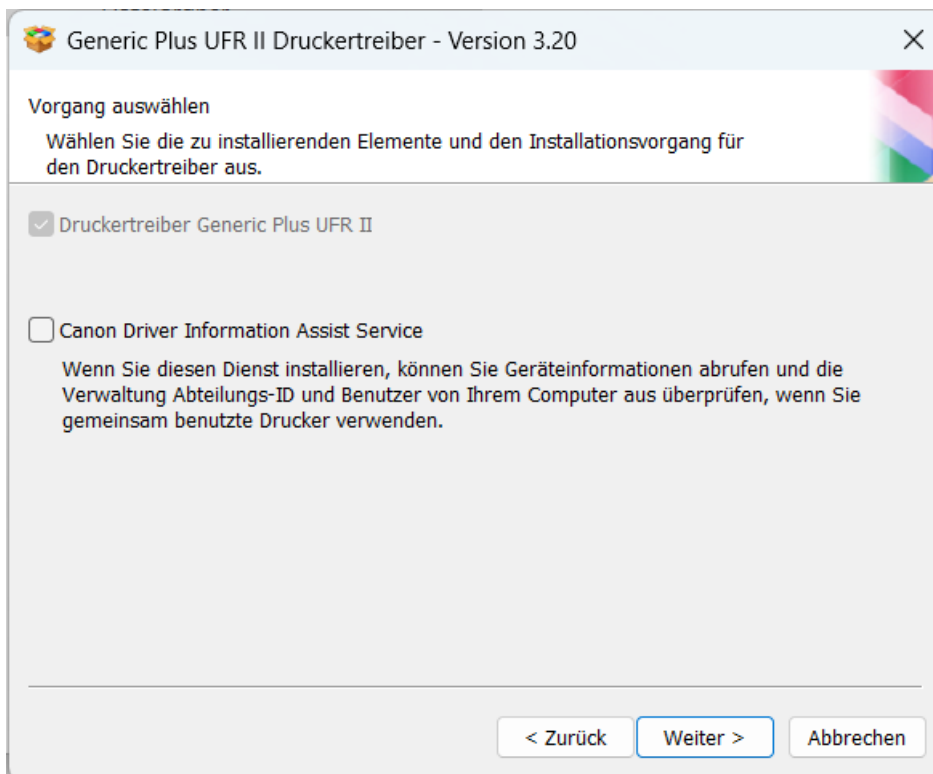


[To Table of Contents](#)

Select **Custom** and continue.

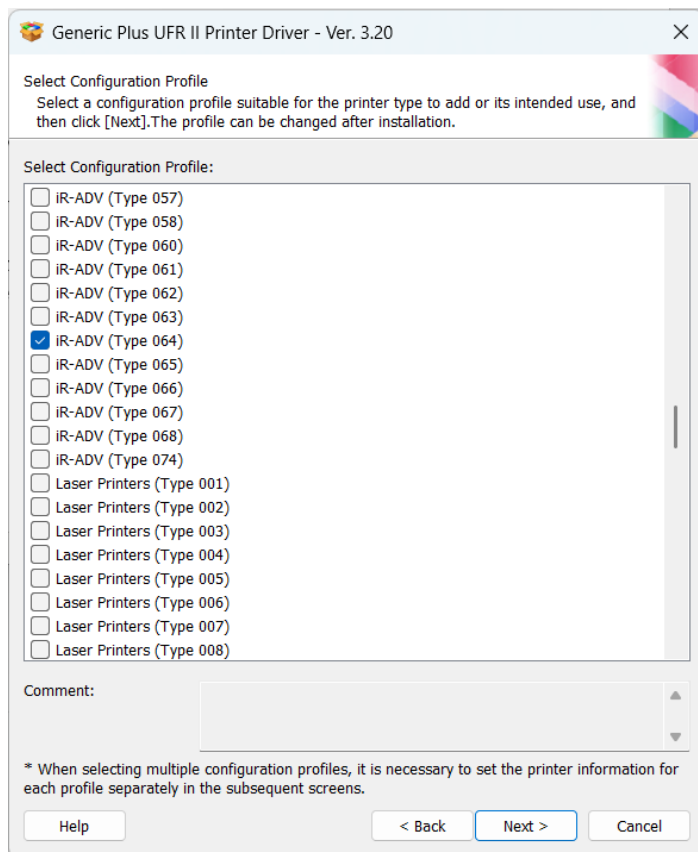


Do not select Canon Driver Information Assist Service, then proceed.

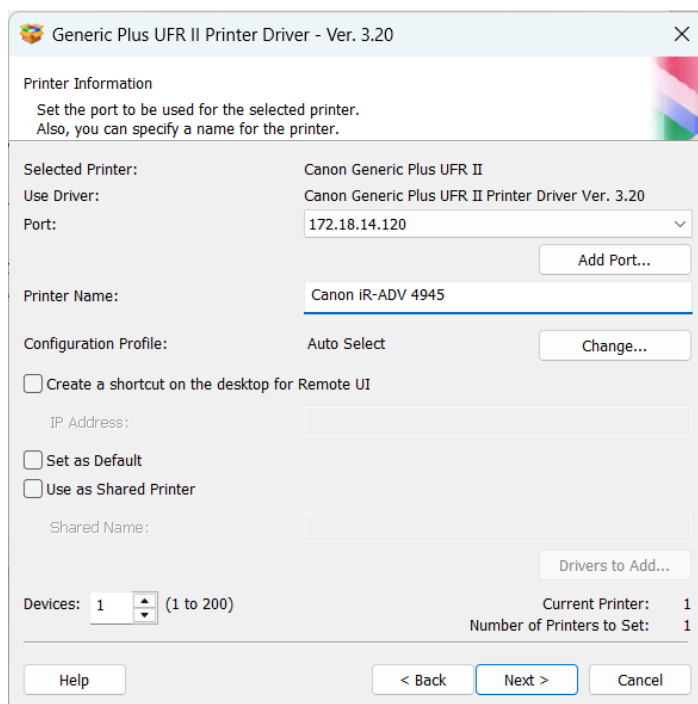


[To Table of Contents](#)

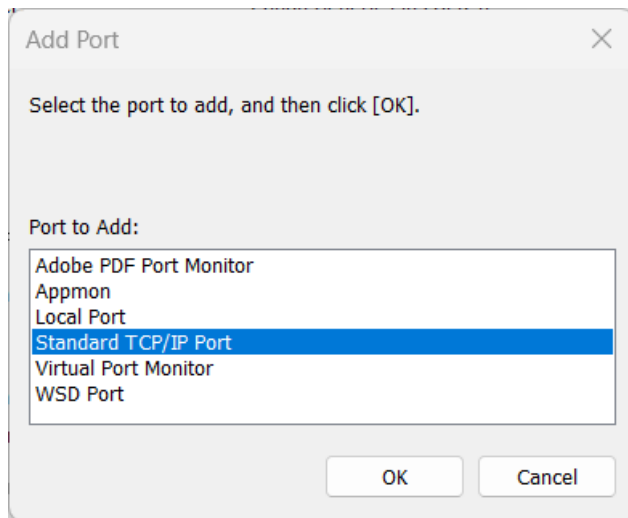
Select only the configuration profile iR-ADV (Type 064) and continue.



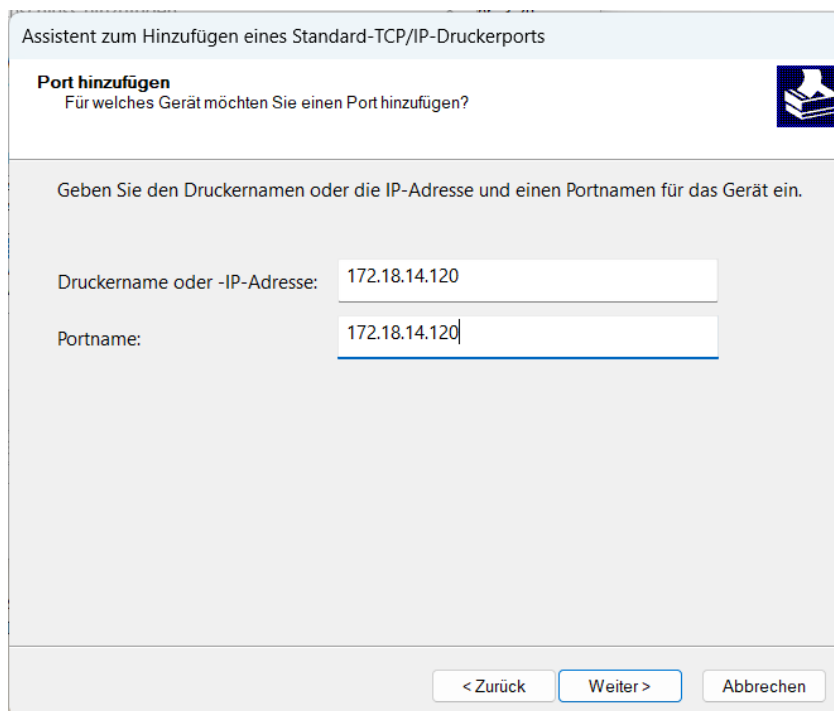
Under **Port:** select **172.18.14.120** from the drop-down menu. Enter a printer name, e.g. Canon iR-ADV 4945, and continue.



If the port is not available, click **Add Port...**, select **Standard TCP/IP Port**, and continue.

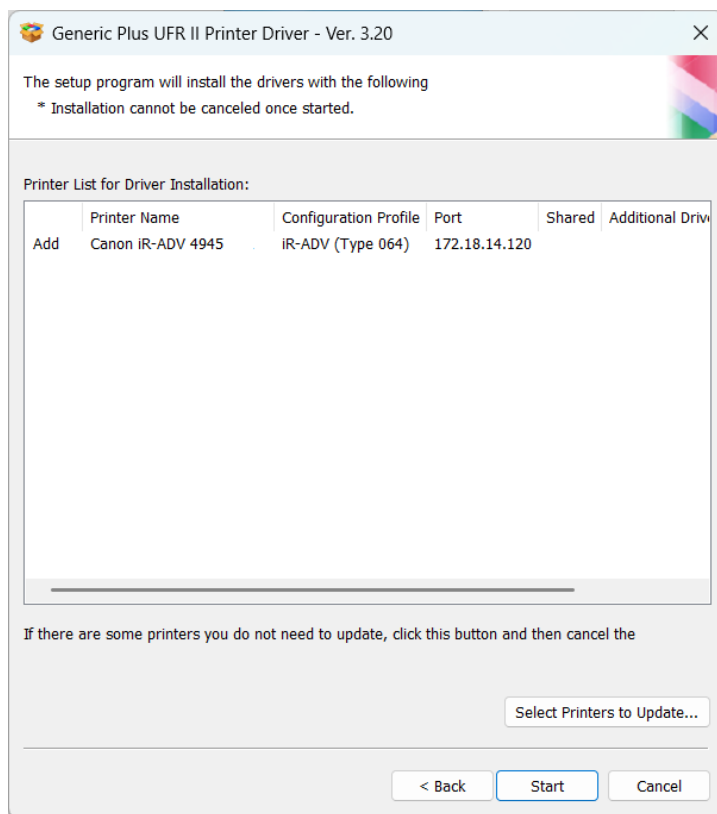


Enter 172.18.14.120 in the field for Printer Name or IP Address, then continue.

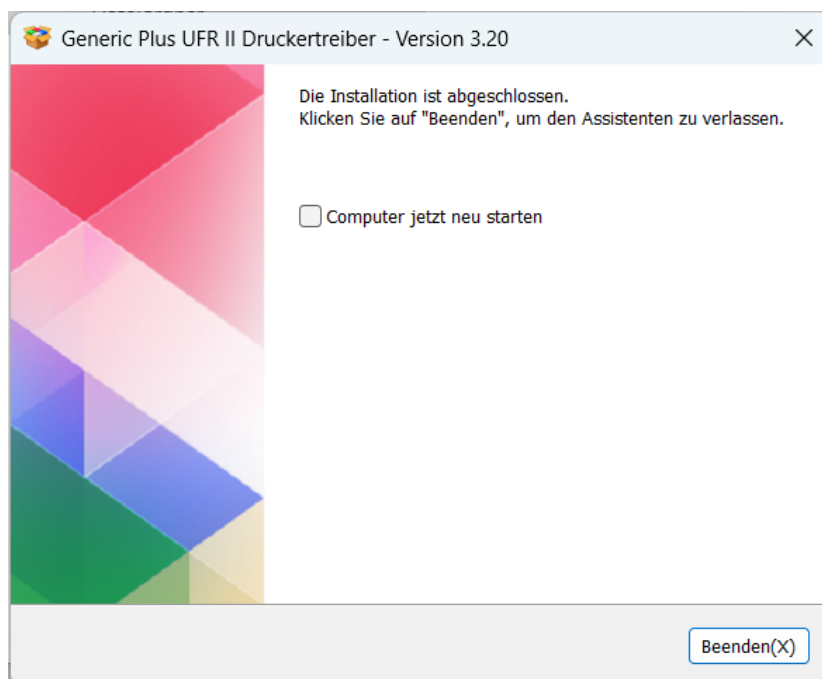


[To Table of Contents](#)

Review your entries and start the installation.



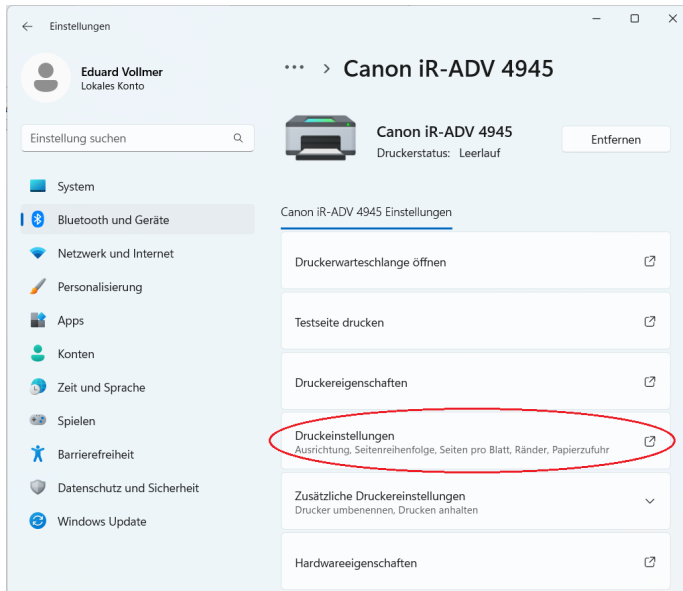
Restart the computer immediately or later to enable all printer functions.



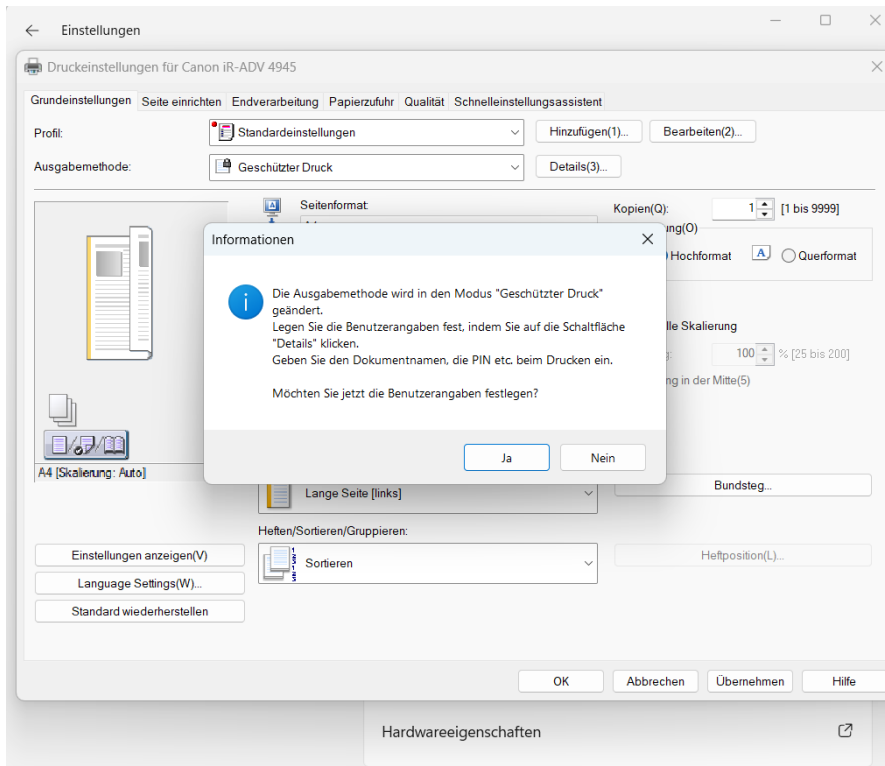
[To Table of Contents](#)

Enable Secure Print

In the settings navigate to **Bluetooth and Devices > Printers and Scanners > Canon iR-ADV 4945**. Open the printer settings.

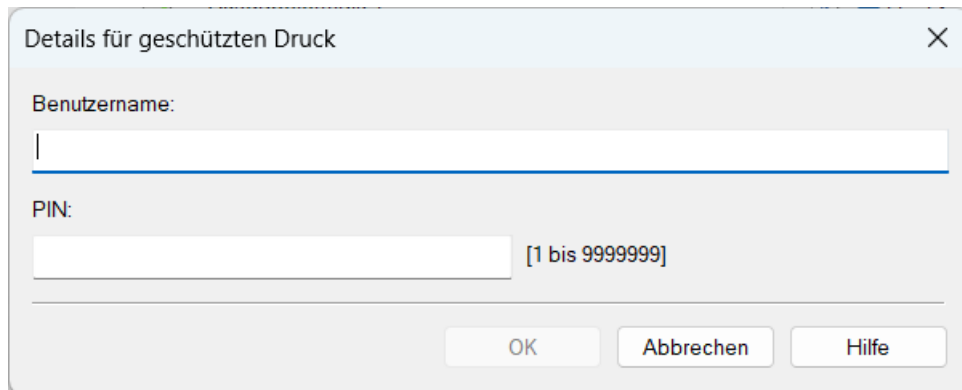


Under **Output Method**, select *Secure Print*, and confirm the message with **Yes**.



[To Table of Contents](#)

Enter a username and PIN, confirm with **OK**, and also confirm the changed printer settings with **OK**. Print jobs sent to this printer will now require entering the PIN at the device before printing.



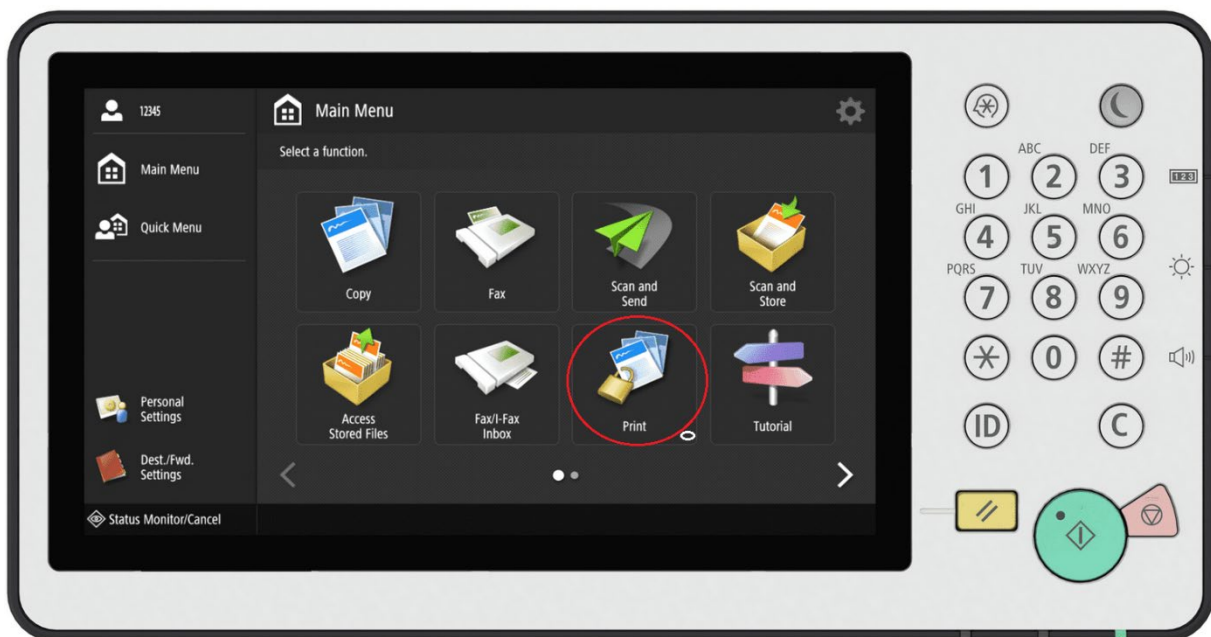
Details für geschützten Druck

Benutzername:

PIN: [1 bis 99999999]

OK Abbrechen Hilfe

At the printer, navigate to the Print menu. Select and execute your own print job. The document will be printed after entering your PIN.



[To Table of Contents](#)